

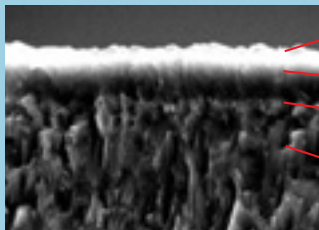
**ISO  
Turning  
Grade**

New leader of steel turning

**NC3120**

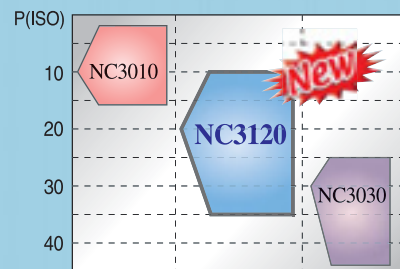
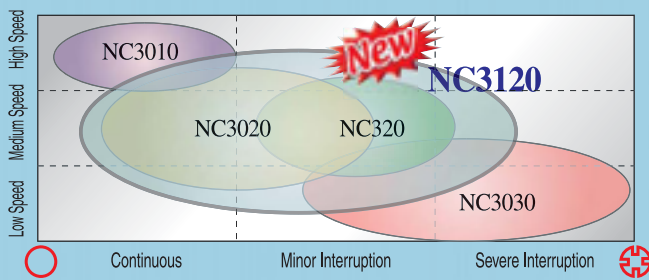
**New**

### Special Features of NC3120



- Toughness of coating has been increased due to the special treatment
- New Al<sub>2</sub>O<sub>3</sub> film having excellent hardness
- Because the special and intermediate film layer has applied, excellent bonding power of film is achieved
- Columnar MT-CVD film for mechanical wear & shock resistance

- Due to the combination of new coating layers & special treatment, excellent toughness & anti built-up edge property are achieved
- Consistence performance under variety of cutting conditions achieved



### Recommended cutting conditions of NC3120

Cutting Conditions	Speed (V:m/min, <i>sfm</i> )					Feed (f:mm/rev, <i>ipr</i> )					Depth (d:mm, <i>inch</i> )				
	100	200	300	400	500	0.1	0.2	0.3	0.4	0.5	1	2	3	4	5
Work piece	330	660	990	1320	1650	0.004	0.008	0.012	0.016	0.020	0.04	0.08	0.12	0.16	0.20
Alloy Steel															
Low Carbon Steel															

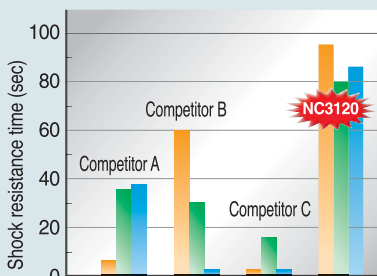
# NC3120

Stock items of NC3120 | Cutting Performance of NC3120

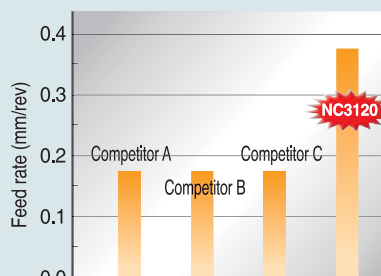
## Stock items of NC3120

CCMT060202-C25	CNMG160616-GR	DNMG150604-GM	SNMG120408-GM	TCMT16T304-HMP	TPMR160308-M
CCMT060202-HMP	CNMG190608-GM	DNMG150604-HA	SNMG120408-GR	TCMT16T308-C25	TPMR220408-M
CCMT060204-C25	CNMG190608-GR	DNMG150604-HC	SNMG120408-HA	TCMT16T308-HMP	VBMT110304-HMP
CCMT060204-HMP	CNMG190608-HR	DNMG150604-VF	SNMG120408-HC	TNMG110304-VF	VBMT110308-HMP
CCMT060208-C25	CNMG190612-GR	DNMG150608-GM	SNMG120408-VF	TNMG160404-GK	VBMT160404-HMP
CCMT060208-HMP	CNMG190612-HR	DNMG150608-GR	SNMG120408-VM	TNMG160404-GM	VBMT160408-HMP
CCMT080308-C25	CNMG190616-GR	DNMG150608-HA	SNMG120412-GR	TNMG160404-HA	VCMT160404-HMP
CCMT09T302-HMP	CNMG190616-HR	DNMG150608-HC	SNMG120412-HR	TNMG160404-HC	VCMT160408-HMP
CCMT09T304-C25	CNMM120408-GH	DNMG150608-HR	SNMG150608-HR	TNMG160404-VF	VNMG160402-VF
CCMT09T304-HMP	CNMM120412-GH	DNMG150608-VF	SNMG150612-GR	TNMG160404-VM	VNMG160404-GF
CCMT09T308-C25	CNMM160616-HH	DNMG150612-GM	SNMG150612-HR	TNMG160408-GK	VNMG160404-GM
CCMT09T308-HMP	CNMM190612-GH	DNMG150612-GR	SNMG190608-GR	TNMG160408-GM	VNMG160404-VF
CCMT120404-C25	CNMM190612-HH	DNMG150612-HC	SNMG190612-GR	TNMG160408-GR	VNMG160408-GM
CCMT120404-HMP	CNMM190616-GH	DNMG150612-HR	SNMG190612-HR	TNMG160408-HA	VNMG160408-VF
CCMT120408-C25	CNMM190616-HH	DNMG150612-VF	SNMG190616-GR	TNMG160408-HC	VNMG160408-VM
CCMT120408-HMP	CNMM190624-GH	DNMG150616-GR	SNMG190616-HR	TNMG160408-HR	VNMG060404-GM
CCMT120412-C25	CNMM250724-GH	DNMG150616-HR	SNMG250924-GR	TNMG160408-VF	VNMG060404-VF
CNMG090304-VF	CNMM250924-GH	KNUX160405-L11	SNMG250924-HR	TNMG160408-VM	VNMG060408-GM
CNMG090308-VF	CNMM250924-HH	KNUX160405-L12	SNMM120408-GH	TNMG160412-GR	VNMG060408-VF
CNMG120404-GM	DCMT070202-HMP	KNUX160405-R11	SNMM120412-GH	TNMG160412-HR	VNMG080404-GM
CNMG120404-HA	DCMT070204-C25	KNUX160405-R12	SNMM150612-GH	TNMG160412-VF	VNMG080404-GS
CNMG120404-HC	DCMT070204-HMP	KNUX160410-L11	SNMM190612-GH	TNMG160412-VM	VNMG080404-HA
CNMG120404-VF	DCMT070208-C25	KNUX160410-L12	SNMM190612-HH	TNMG220404-GM	VNMG080404-VF
CNMG120404-VM	DCMT070208-HMP	KNUX160410-R11	SNMM190616-GH	TNMG220404-VF	VNMG080408-GK
CNMG120408-GK	DCMT11T302-HMP	KNUX160410-R12	SNMM190616-HH	TNMG220408-GK	VNMG080408-GM
CNMG120408-GM	DCMT11T304-C25	RCMX1003M0	SNMM190624-GH	TNMG220408-GM	VNMG080408-GR
CNMG120408-GR	DCMT11T304-HMP	RCMX1204M0	SNMM250724-GH	TNMG220408-GR	VNMG080408-GS
CNMG120408-HA	DCMT11T308-C25	RCMX1606M0	SNMM250724-HH	TNMG220408-HC	VNMG080408-HA
CNMG120408-HC	DCMT11T308-HMP	RCMX2006M0	SNMM250924-GH	TNMG220408-HR	VNMG080408-HC
CNMG120408-HR	DNMG110402-VF	RCMX2507M0	SPMR090304-F	TNMG220408-VF	VNMG080408-HR
CNMG120408-VF	DNMG110404-GM	SCMT09T304-C25	SPMR090308-M	TNMG220412-GM	VNMG080408-VF
CNMG120408-VM	DNMG110404-VF	SCMT09T304-HMP	SPMR120304-F	TNMG220412-GR	VNMG080408-VM
CNMG120412-GK	DNMG110408-GM	SCMT09T308-C25	SPMR120308-M	TNMG220416-HR	VNMG080412-GM
CNMG120412-GM	DNMG110408-VF	SCMT09T308-HMP	TCMT090204-C25	TNMG270612-GR	VNMG080412-GR
CNMG120412-GR	DNMG150404-GM	SCMT120404-C25	TCMT090204-HMP	TNMM220412-GH	VNMG080412-HR
CNMG120412-HR	DNMG150404-VF	SCMT120408-C25	TCMT090208-C25	TNMM220412-HH	VNMG080412-VM
CNMG120412-VF	DNMG150404-VM	SNMG090304-VF	TCMT110202-C25	TNMM220416-GH	
CNMG120412-VM	DNMG150408-GF	SNMG090308-VF	TCMT110204-C25	TNMM270616-HH	
CNMG160608-GR	DNMG150408-GM	SNMG120404-GM	TCMT110204-HMP	TPMR1110304-F	
CNMG160608-HR	DNMG150408-GR	SNMG120404-HA	TCMT110208-C25	TPMR110308-M	
CNMG160612-GR	DNMG150408-VF	SNMG120404-HC	TCMT110208-HMP	TPMR160304-F	
CNMG160612-HR	DNMG150408-VM	SNMG120404-VF	TCMT16T304-C25	TPMR160308-F	

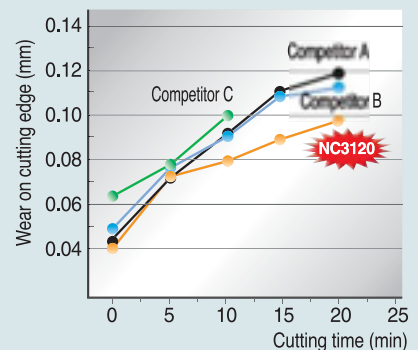
## Cutting Performance of NC3120



- Shock resistance (SCM440 - 4grooves)
- V=200m/min (660sfm), f=0.45mm/rev (0.018ipr), d=2.0mm (0.08inch), dry



- Limit feed rate (SCM440 - 4grooves)
- V=100m/min (330sfm), f=Variable, d=2.0mm (0.08inch), dry



- Wear resistance (SCM440)
- V=250m/min (820sfm), f=0.3mm/rev (0.012ipr), d=2.0mm (0.08inch), wet



HEAD OFFICE  
 Holystar B/D 953-1, Doksanbon-Dong, Guemcheon-Gu, Seoul, Korea  
 TEL: +82 2 522 3181 FAX: +82 2 522 3184, +82 2 3474 4744  
 WEB: www.korloy.com

CHEONGJU FACTORY  
 53-16, Songjeong-Dong, Hungduk-Gu, Chengju, Chungcheongbuk-Do, Korea  
 TEL: +82 43 262 0141 FAX: +82 43 262 0146  
 E-MAIL: export@korloy.com

JINCHEON FACTORY  
 767-1, Guangheawon-Ri, Guangheawon-Myon, Jinccheon-Gun, Chungcheongbuk-Do, Korea  
 TEL: +82 43 535 0141 FAX: +82 43 535 0144